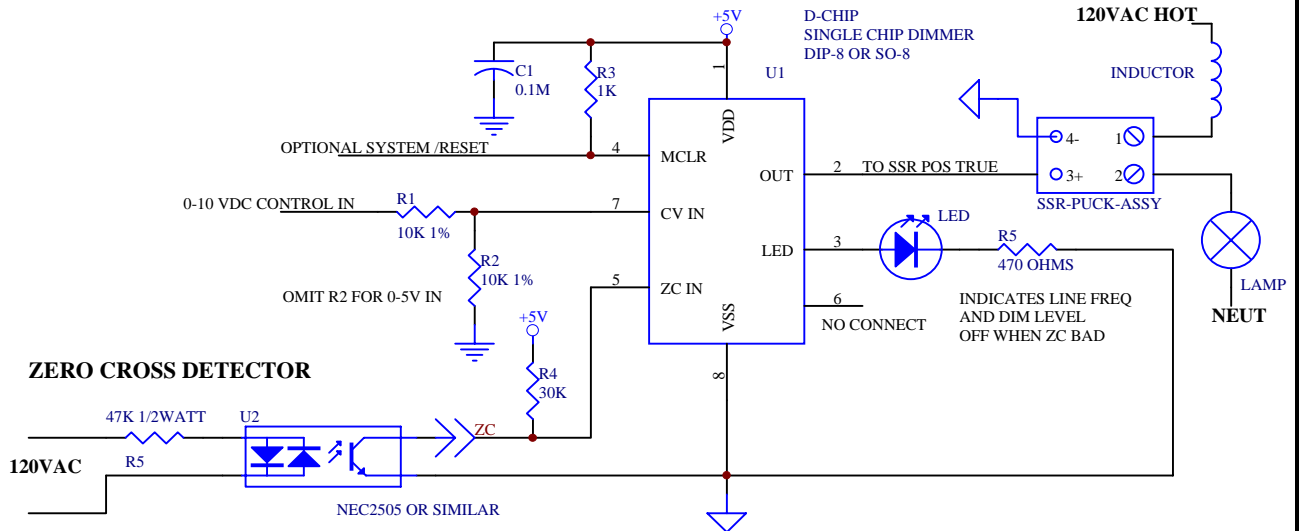


L12760

D-CHIP™

SINGLE CHIP DIMMER



U1 Part number:
L12760
Specify DIP or SOIC when ordering.

The L12760 is a single chip implementation of all the control and shaping circuitry needed to create a theatrical quality dimmer.

0-5V or (0-10V) controls the full range of output.

LED output for status:
LED turns on only when input freq signal is present and either 50 or 60 Hz
LED blinks 3 times to indicate 50Hz.
LED also shows dimming level

Automatic detection and adjustment for 50/60Hz.

True theatrical square law curve, smooth fades at both ends of the control range.

Low power.

Very low component count.

Drives random turn on type hockey pucks or your own MOCxxxx or other opto (use a resistor).

8 pin DIP or SOIC.

Integrated Controls, Inc.

2851 21st Street, San Francisco, CA 94110

tel > 415-647-0480

fax > 415-647-3003

email > dsicon@integratedcontrolsinc.com

web > www.integratedcontrolsinc.com

